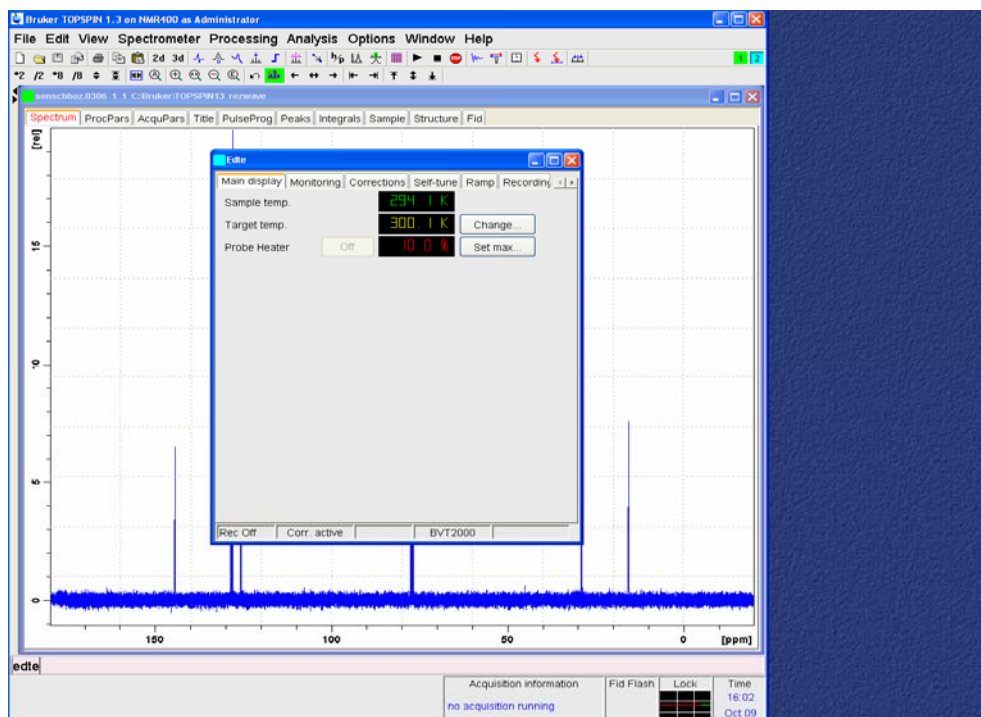


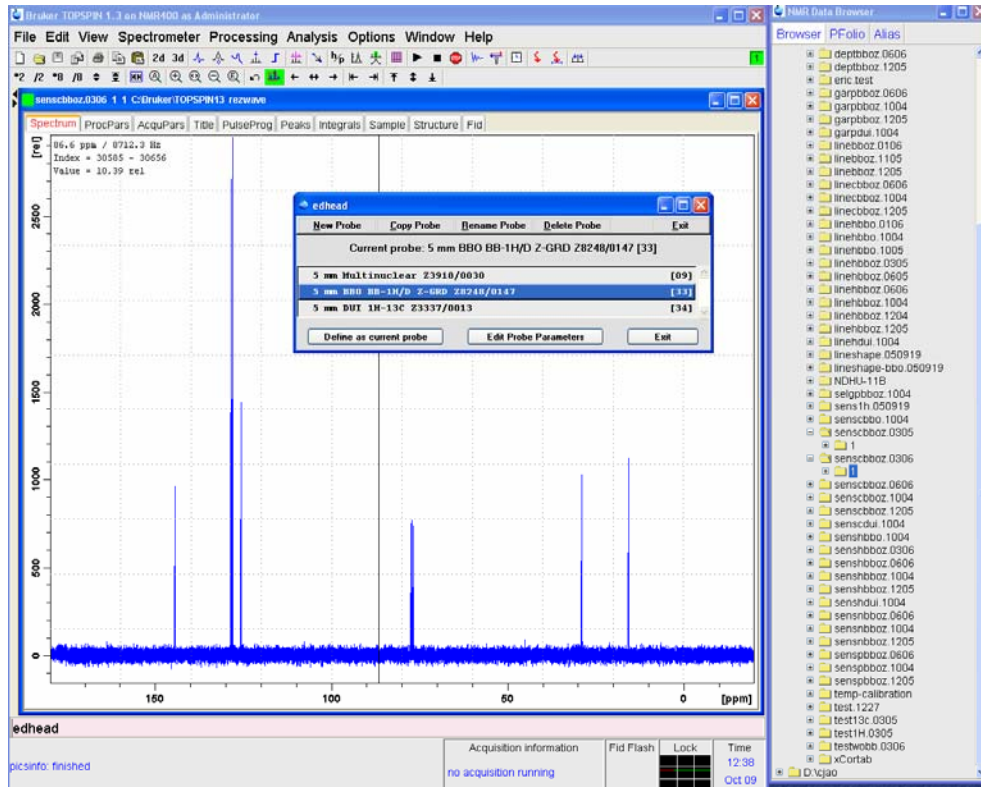
探頭更換步驟(Probehead install procedure)

1. 確認實驗停止
2. 確認樣品沒有氬鎖定(lock off)
3. 確認樣品沒有旋轉(spin off)(若作固態確認轉速為 0)
4. 確認樣品已從磁鐵中取出
5. 確認溫度控制(edte)已關閉 (Heater OFF)

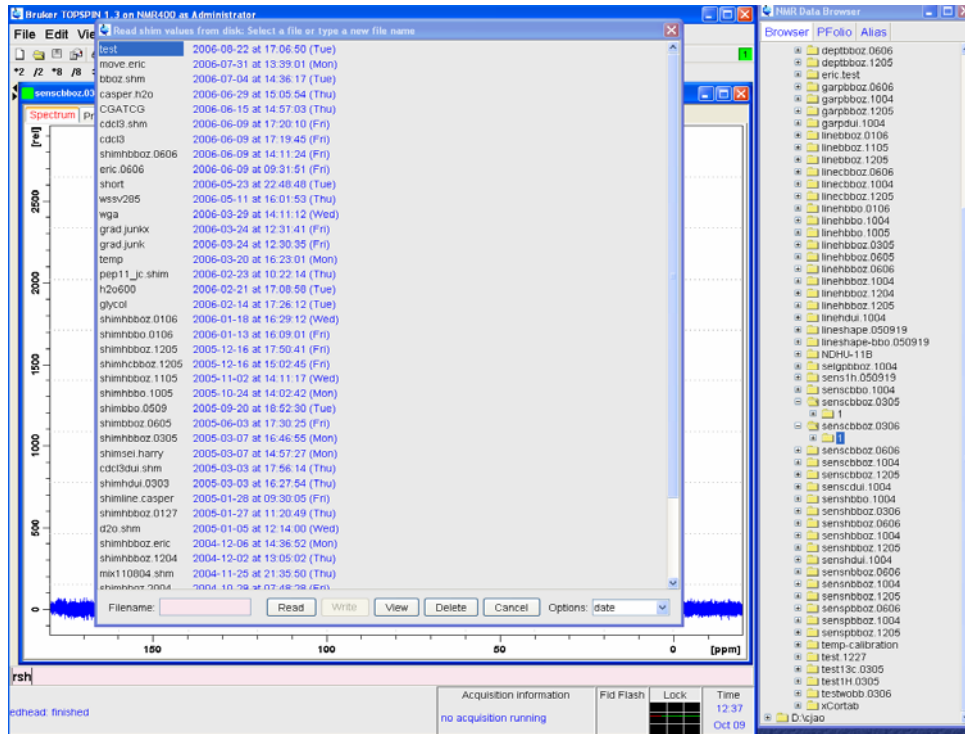


6. 將探頭上的連接訊號線，依序取下
7. 將探頭取下
8. 更換探頭，並安裝至磁鐵中
9. 將訊號線連接至探頭

10. 確認溫控器(Heater and thermocouple)及氣體已經連接至探頭
11. 開啟 edte, 如有需要, 變更 thermocouple type 並將 heater power ON.
12. 開啟 edhead, 並選擇探頭種類



13. 讀取勻場檔案, (rsh *****)



The screenshot displays the Bruker TOPSPIN 1.3 software interface. The main window is titled "Bruker TOPSPIN 1.3 on NMR400 as Administrator". It features a menu bar (File, Edit, View), a toolbar, and a central area divided into three main sections:

- File List (Left):** A list of files with columns for filename, date, and time. The selected file is "senscbz03".
- Spectrum Plot (Center):** A plot showing intensity versus chemical shift in ppm, ranging from 0 to 2500. The x-axis is labeled "[ppm]" and the y-axis is labeled "[a.u.]".
- MMR Data Browser (Right):** A tree view showing a hierarchy of data folders and files, including "deptbzo", "garpbzo", "linebzo", "senscbzo", and "temp_calibration".

At the bottom of the interface, there is a status bar with the following information:

- Acquisition Information:** no acquisition running
- Fid Flash:** Lock (indicated by a green light)
- Time:** 12:37
- Date:** Oct 09
- User:** D:\cjao